

## FEATURES

737XS (steel) and 747XS (stainless steel) 2-way ball valves are designed for the shut-off of networks of high-temperature fluids, such as saturated steam up to 15 bar. These 3-piece external tie-bolt ball valves are easy to remove for servicing. This full-bore valve has an anti-static device and double sealing at the packing gland. It is EC-, ATEX- fire safety- and TA-LUFT-approved.


**FIRE SAFE**

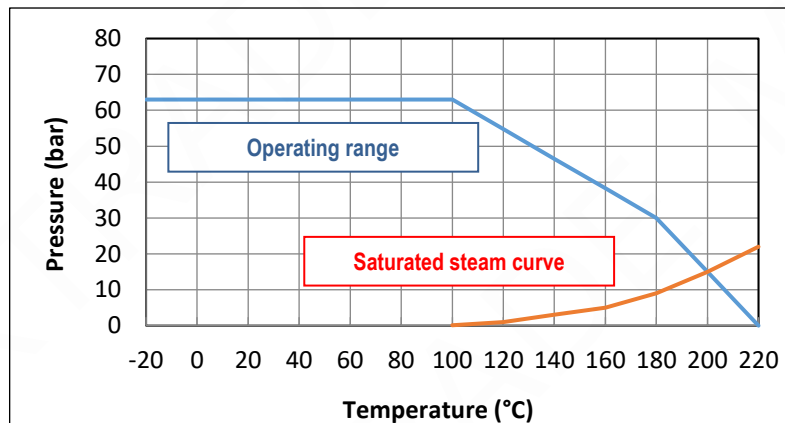

## AVAILABLE MODELS

1/2" to 2"

Connection	G	BW	SW
steel	737 XS	738 XS	739 XS
stainless st.	747 XS	748 XS	749 XS

## LIMITS OF USE

<b>Material</b>	steel	stainless steel
<b>Fluid pressure: PS</b>	63 bar (20°C)	
<b>Fluid temperature: WT°</b>	-25°C / +220°C	- 40°C / +220°C
<b>Use on steam</b>	15 bar / +200°C	

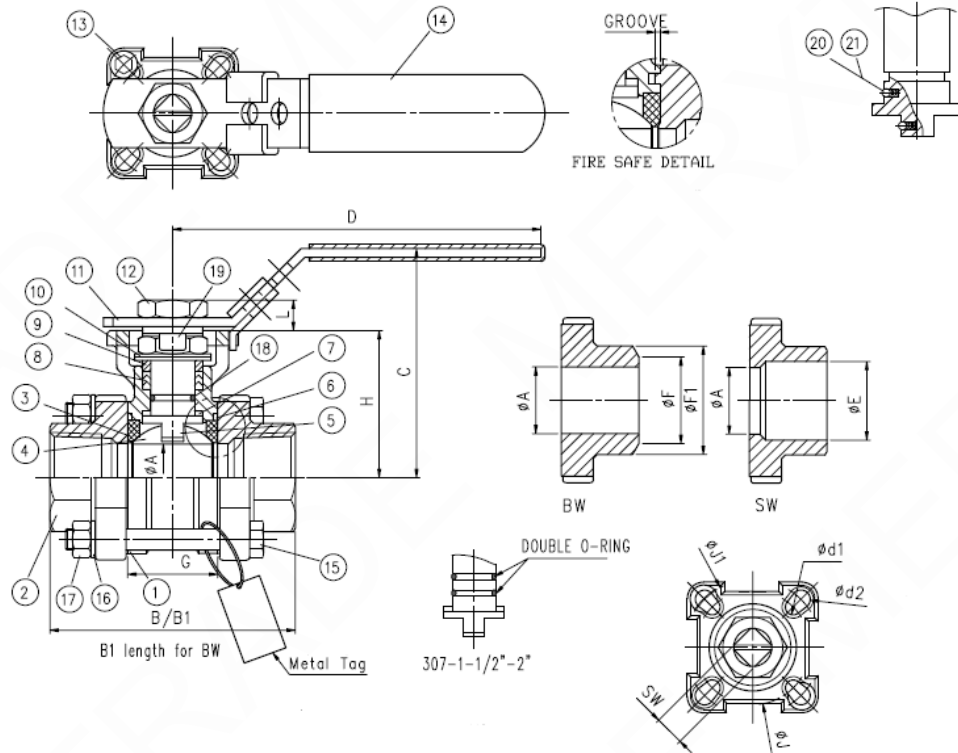


## DIRECTIVES AND MANUFACTURING STANDARDS

OBJECT	Standard	ON	OBJECT	Standard
Pressure Equipment Directive 2014/68/EC	1/2" to 1": not subject		Final test	EN 12266
	1"1/4 to 2": category III	TÜV 0035	Material certificate	EN 10204
Size	EN 12516-1		Motorisation connection	ISO 5211
Fire safe	API 607/5 – ISO 10497-5			
ATEX Directive	II 2G/D Tx zones 1,2,21 and 22	SIRA 0518		
	EN 13463-1 and 5			

## CONSTRUCTION

No.	Name	Steel	Stainless steel	No.	Name	Steel	Stainless steel
1	Body	1.0619	1.4408	12	Nut	304 SS	304 SS
2	Ends	1.0619	1.4408	13	Stop	304 SS	304 SS
3*	Seats	PTFE+50% stainless steel	PTFE+50% stainless steel	14	Coupling	PVC	PVC
4	Ball	CF8M / 316	CF8M / 316	15	Tie-bolts	304 SS	304 SS
5	Stem	316 SS	316 SS	16	Washer	304 SS	304 SS
6*	Body gasket	Graphite	Graphite	17	Nuts	304 SS	304 SS
7*	Washer	PTFE+15%GF	PTFE+15%GF	18*	O-ring	FPM	FPM
8*	Gasket	Graphite	Graphite	19	Tab washer	304 SS	304 SS
9	Spacer	301 SS	301 SS	20	Anti-static	316 SS	316 SS
10	B. washer	301 SS	301 SS	21	Spring	304 SS	304 SS
11	Lever	304 SS	304 SS	* Parts included in the maintenance kit			



## DIMENSIONS (mm)

DN	A	B (G)	B (SW)	B1 (BW)	C	D	E	F	F1	G	H	J1	SW
1/2"	16	75	75	75	70.9	110	21.9	17	22.4	25.2	42.3	42	9
3/4"	20	80	80	90	73.4	110	27.2	22	28.2	27.7	44.8	42	9
1"	24.5	90	90	100	84.1	135	34.0	28	33.7	33.0	54.0	50	11
1" 1/4	32	110	110	110	89.3	135	42.7	37	44.0	41.2	59.2	50	11
1" 1/2	38	120	120	125	109.5	165	48.8	43	50.8	49.3	73.5	70	14
2"	50	140	140	150	118.9	165	61.3	54	62.6	63.6	82.9	70	14